

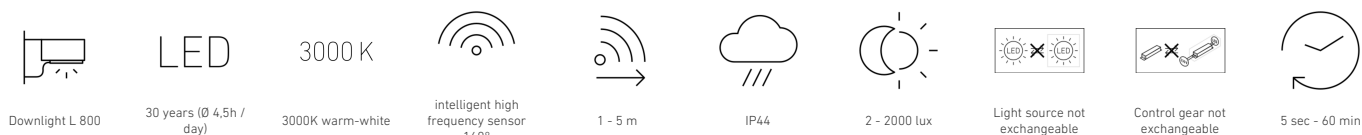
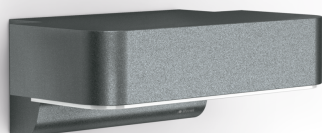
Sensor-switched LED outdoor light

# L 800 SC

Anthracite

EAN 4007841 065690

Article number 065690



## Function description

The most modern outdoor light in the world. Designer sensor-switched outdoor light L 800 SC with invisible high-frequency sensor, ideal for building entrances and fronts of buildings, 7,5 W STEINEL LED lighting system, 466 lm, 160° coverage angle, reach from 1 - 5 m, for stylish downlighting, includes soft light start and optional manual override for 4 hours. Wirelessly interconnectable by Bluetooth Mesh and adjustable and controllable via free app.

## Technical specifications

Dimensions (L x W x H)	146 x 230 x 88 mm	Photo-cell controller	Yes
With lamp	Yes, STEINEL LED system	Transmitter range	30 m
Manufacturer's Warranty	3 years	Transmitter power	< 1 mW
Settings via	App, Connect Bluetooth Mesh	Luminous flux total product	466 lm
With remote control	No	Measured luminous flux (360°)	466 lm
Version	Anthracite	Total product efficiency	62 lm/W
PU1, EAN	4007841065690	Colour temperature	3000 K
Application, place	Outdoors	Lamp	LED cannot be replaced
Application, room	garden, front door, courtyard & driveway, all round the building, terrace / balcony	Service life LED L70B50 (25°)	> 60000 h
Colour	Anthracite	Base	without
includes sheet of self-adhesive numbers	No	LED cooling system	Active and Passive Thermo Control
Installation site	wall	Soft light start	Yes
Impact resistance	IK03	Continuous light	selectable
IP-rating	IP44	Functions	Motions sensor
Protection class	II	Twilight setting	2 – 2000 lx
		Time setting	5 s – 60 Min.
		Basic light level function	Yes

<https://www.steinel.de>

Subject to technical modifications

01.2025 Page 1 from 3

# L 800 SC

Anthracite

EAN 4007841 065690

Article number 065690



## Technical specifications

Ambient temperature	from -20 up to 40 °C
Housing material	Aluminium
Cover material	Plastic, opal
Mains power supply	220 – 240 V / 50 – 60 Hz
Output	7,5 W
Mounting height max.	2,50 m
Slave modeselectable	Yes
Sneak-by guard	No
Capability of masking out individual segments	No
Electronic scalability	Yes
Mechanical scalability	No
Reach, detail	Detection zone adjustable on 2 axes
Reach, radial	r = 5 m (35 m <sup>2</sup> )
Reach, tangential	r = 5 m (35 m <sup>2</sup> )

Basic light level function time	OFF, Brightness-controlled, 10 sec – 60 min
Main light adjustable	0 - 100 %
Interconnection	Yes
Type of interconnection	Master/master, Master/slave
Basic light level function in per cent	10 – 100 %
Basic light level function percentage, from	10 %
Basic light level function percentage, up to	100 %
Interconnection via	Bluetooth Mesh Connect
Colour Rendering Index CRI	= 82
Optimum mounting height	2 m
Detection angle	160 °
Product category	Sensor-switched LED outdoor light

Sensor-switched LED outdoor light

# L 800 SC

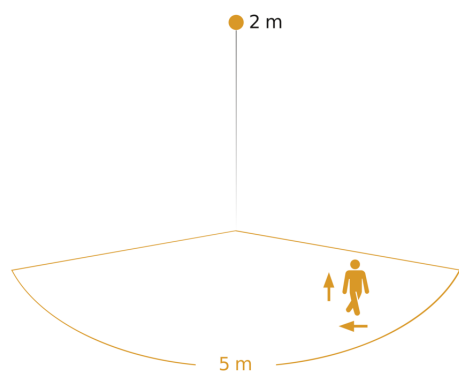
Anthracite

EAN 4007841 065690

Article number 065690

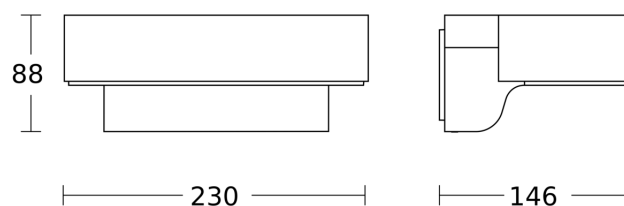


## Detection Zone



Possible mounting height: 1,80 m – 2,50 m  
Orange: radial and tangential

## Dimension Drawing



## Circuit diagram Bluetooth

